



CRS812 DDQ

400 Gigabit networking without the price shock!



2x
1G/10G
ETHERNET PORTS



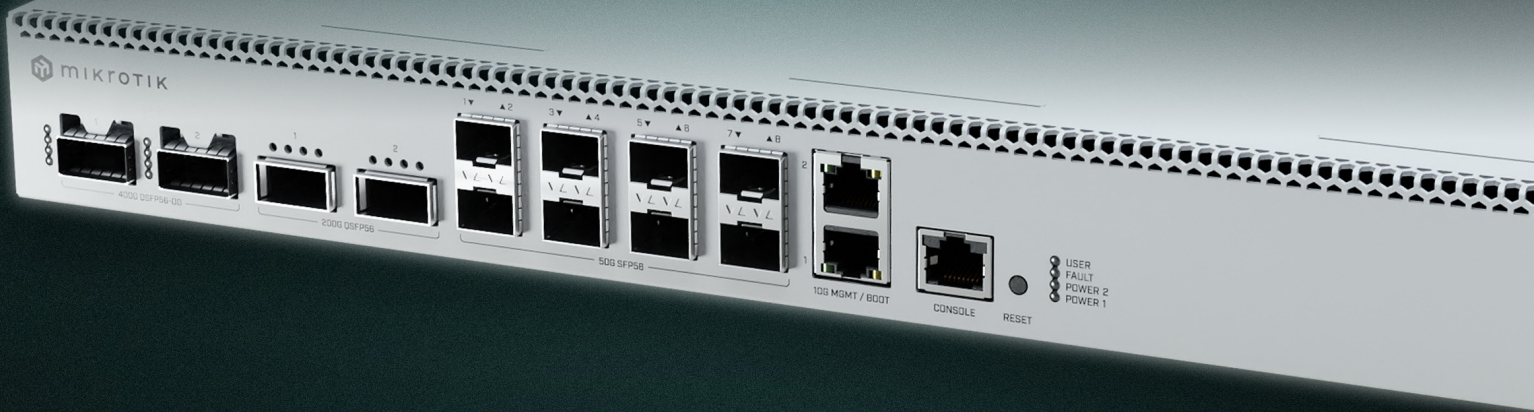
8x
50G SFP56
PORTS



2x
200G QSFP56
PORTS



2x
400G QSFP56-DD
PORTS



The CRS812 DDQ is your next leap forward – a powerful, efficient, and cost-effective way to bring 50G, 200G, and 400G into your rack.



4 GB of RAM



Quad-core
2 GHz ARM CPU



Dual-redundant
hot-swap power
supplies



4x hot-swap
cooling fans



RouterOS v7



400G used to mean expensive, complex, and out of reach.

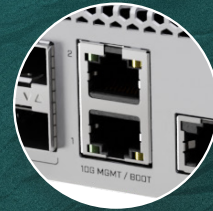
The **CRS812 DDQ** changes that!

With a modern Marvell switch chip and powerful ARM CPU, it delivers advanced routing, switching, and traffic management features trusted in millions of RouterOS deployments – now with ports up to 400 Gbps!

Where does it fit?

- Top-of-rack / leaf switch with 400G uplinks to the spine
- **Campus core** bridging 10G legacy with modern 50G interfaces
- **Service provider aggregation** node
- **Labs, AI clusters, media workflows** where fast “east-west” traffic is critical

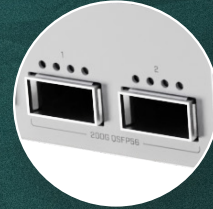
The CRS812 scales your network from 10 to 400G in one simple, affordable, yet managed RouterOS v7 box – no forklift upgrades needed!



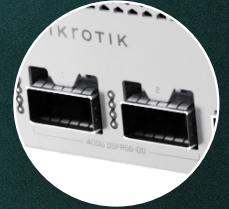
2x 1G/10G
Ethernet ports



8x 50G
SFP56 ports



2x 200G
QSFP56



2x 400G
QSFP56-DD ports

CRS812 interface speed support:

- 2x 10M/100M/1G/10G Ethernet ports
- 8x 1G/2.5G/5G/10G/25G/50G SFP56 ports
- 2x 40G/50G/100G/200G QSFP56 ports
- 2x 40G/50G/100G/200G/400G QSFP-DD ports

* QSFP56/QSFP-DD ports also support break-out modes to 1G/2.5G/5G/10G/25G/50G

 Check out our YouTube and TikTube videos for this product! 

Accessories

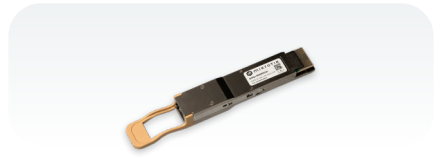
Alongside CRS812, we're introducing a set of ready-to-go 400G accessories:



DDQ+DA0001
400G DAC, 1 m

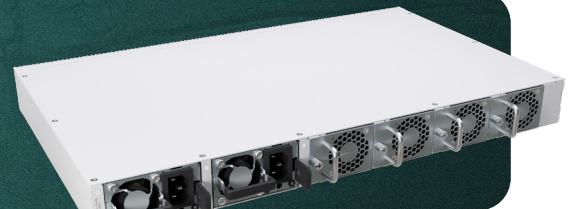


DDQ+DA00031
400G DAC, 3 m



DDQ+85MP01D
400G 100 m optical transceiver

With CRS812, 400 Gigabits is no longer out of reach – it's an affordable way to launch your network into the future, while keeping your existing gear in the loop!



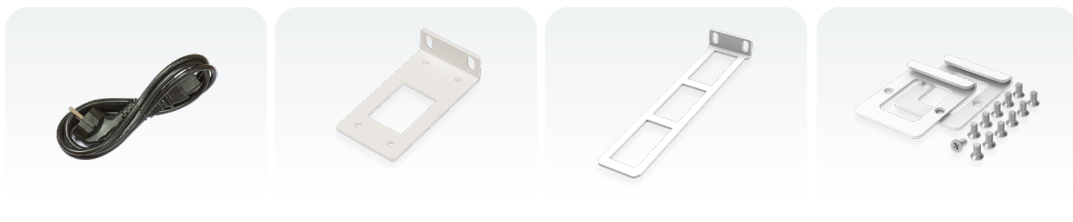
• Specifications

Product code	CRS812-8DS-2DQ-2DDQ-RM
CPU	Quad-Core AL52400 2000 MHz
CPU architecture	ARM 64bit
Size of RAM	4 GB
RAM type	DDR4
Storage	512 MB, NAND
Number of 2x 10M/100M/1G/10G Ethernet ports	2
Number of 50G SFP56 ports	8
Number of 200G QSFP56 ports	2
Number of 400G QSFP56-DD ports	2
Switch chip model	98DX7335
Dimensions	443 x 268 x 44 mm
Operating system	RouterOS v7, License level 6
Operating temperature	-10°C to +50°C

• Powering

Number of AC inputs	2
AC input range	100-240 V
Power adapter nominal voltage	12 V
Power adapter nominal current	20.8 A
Max power consumption (without attachments)	81 W
Max power consumption	134 W

• Included parts



2 Power cords

Rackmount ears

Rackmount rear
support ears

Fastening set